

Public Information Meeting

January 12, 2012

Summit Street Reconstruction

PIN 4754.36

City of Batavia



**A Federal-aid Project Administered by the
City of Batavia Department of Public Works**



ERDMAN
ANTHONY 

Project Team

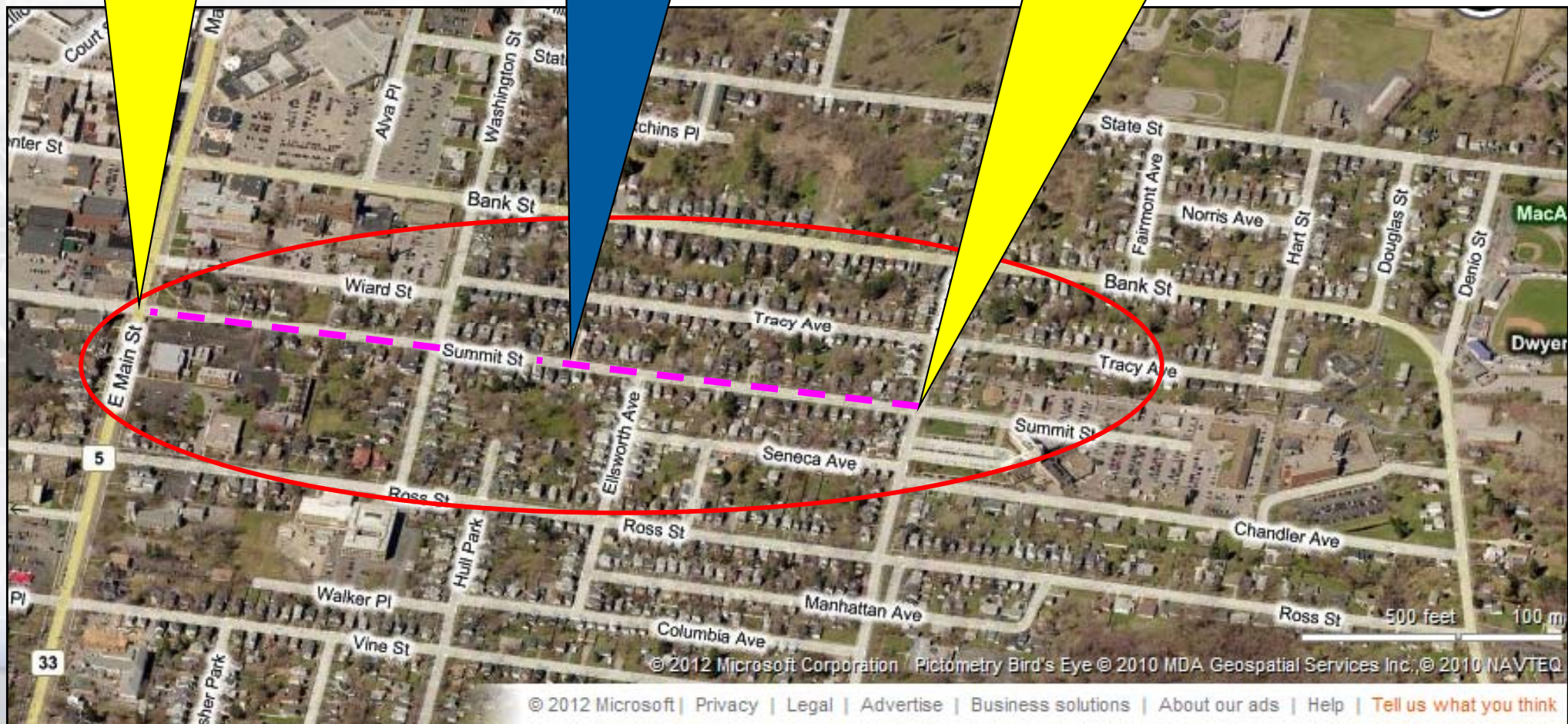
- **City of Batavia**
Sally Kuzon – Director of Public Works
- **Erdman Anthony - Consultant**
Marc Kenward - Project Manager
Dennis Elias – Project Engineer
- **Trowbridge & Wolf – Landscape Architecture**
- **Ravi Engineering – Environmental Subconsultant**
- **R.K. Hite & Co. – Right-of-Way Subconsultant**

Project Location

Project Limit @ Main Street

PROJECT LOCATION

Project Limit @ North Street



Project Process

**We are HERE !
1-12-2012**



Existing Street Features

- 66 - foot wide Right-of-Way
- 30 – foot wide Pavement
- 12 – foot wide Tree Lawn area
- 4 – foot wide Sidewalks



Why is Project Needed?

- **Pavement Deterioration / Poor Riding Surface**



Why is Project Needed?

- **Lack of adequate drainage infrastructure**



Why is Project Needed?

- **Deteriorated, Inconsistent and ADA Non-compliant Pedestrian Accommodations**



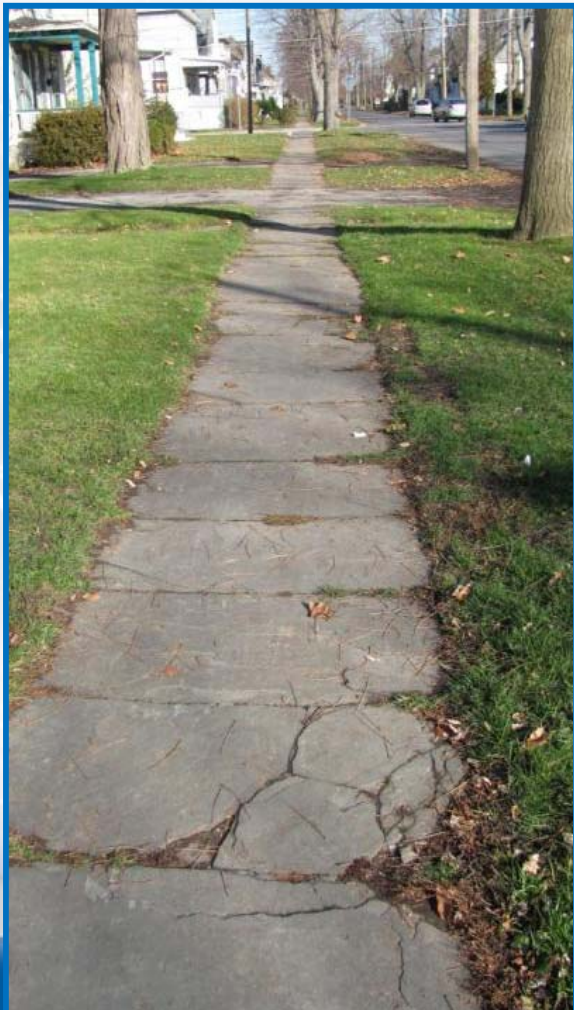
History

- Originally Built in ????



History

- Hitching Post
- Stone / Slate Sidewalks



Neighborhood Character

- Typical Urban Residential w/On-street Parking



Some Facts:

- Traffic Volumes

North End: *Washington Ave. to North Street*

3,950 vehicles per day

475 vehicles during the peak hour

South End: *E. Main St. to Washington Ave.*

4,220 vehicles per day

506 vehicles during the peak hour

Some Facts:

■ **ACCIDENTS** (Jan. 1, 2009 – Jan. 4, 2012)

18 over 3 year period (Jan. 1, 2009 – Jan. 4, 2012)

Intersection accidents:

@ Main Street.....1

@ Washington Avenue..... 5

@ North Street..... 3



Some Facts:

■ ACCIDENTS

Non-intersection Accidents

Main St. to Washington Avenue.....1

0.44 accidents / million vehicle miles (Acc/MVM)

> Statewide Average of **2.11** Acc/MVM

Washington Avenue to North Street.....8

3.78 accidents / million vehicle miles (Acc/MVM)

> Statewide Average of **2.11** Acc/MVM

Some Facts:

■ **ACCIDENTS**

Non-intersection Accidents & Parking

Main St. to Washington Avenue.....1 of 1

Washington Avenue to North Street.....5 of 8



Design Elements

Element	Range
<u>Lane Width</u> (curbed)	10 ft. min; 12 ft. Desirable
<u>Parking Lane</u> Residential	7 ft. min; 8 ft. Desirable
Curb - Curb Width (parking 1-side)	27 ft. min.; 32 ft. Desirable
<u>Sidewalk Width</u> ADAAG Minimum Desirable	3 ft. min. w/ 5 ft. for passing 5 foot 7 foot adjacent to curb

During Construction

- A detailed Traffic Control Plan will be developed for the Maintenance of Traffic during the construction's duration
- Access will be provided at all times to properties abutting the project.
- We are aware of and sensitive to those RESIDENTIAL and INSTITUTIONAL facilities that DEPEND on access.
- Traffic will be maintained in at least one-direction during the duration of the construction.

Project Costs

Item	Programmed Cost
Scoping & Preliminary Engineering	\$ 135,000
Detailed Design	\$ 168,000
Right-of-Way	\$ 10,000
Construction	\$1,886,000
Construction Inspection	\$ 226,000
Total	\$2,425,000

Next Steps

- Develop Alternatives
- Prepare Draft Design Report
- Individual Owner / Resident meetings if needed
- Hold Another Public Informational Meeting

We Need Your Input!

Sidewalks & Crosswalks

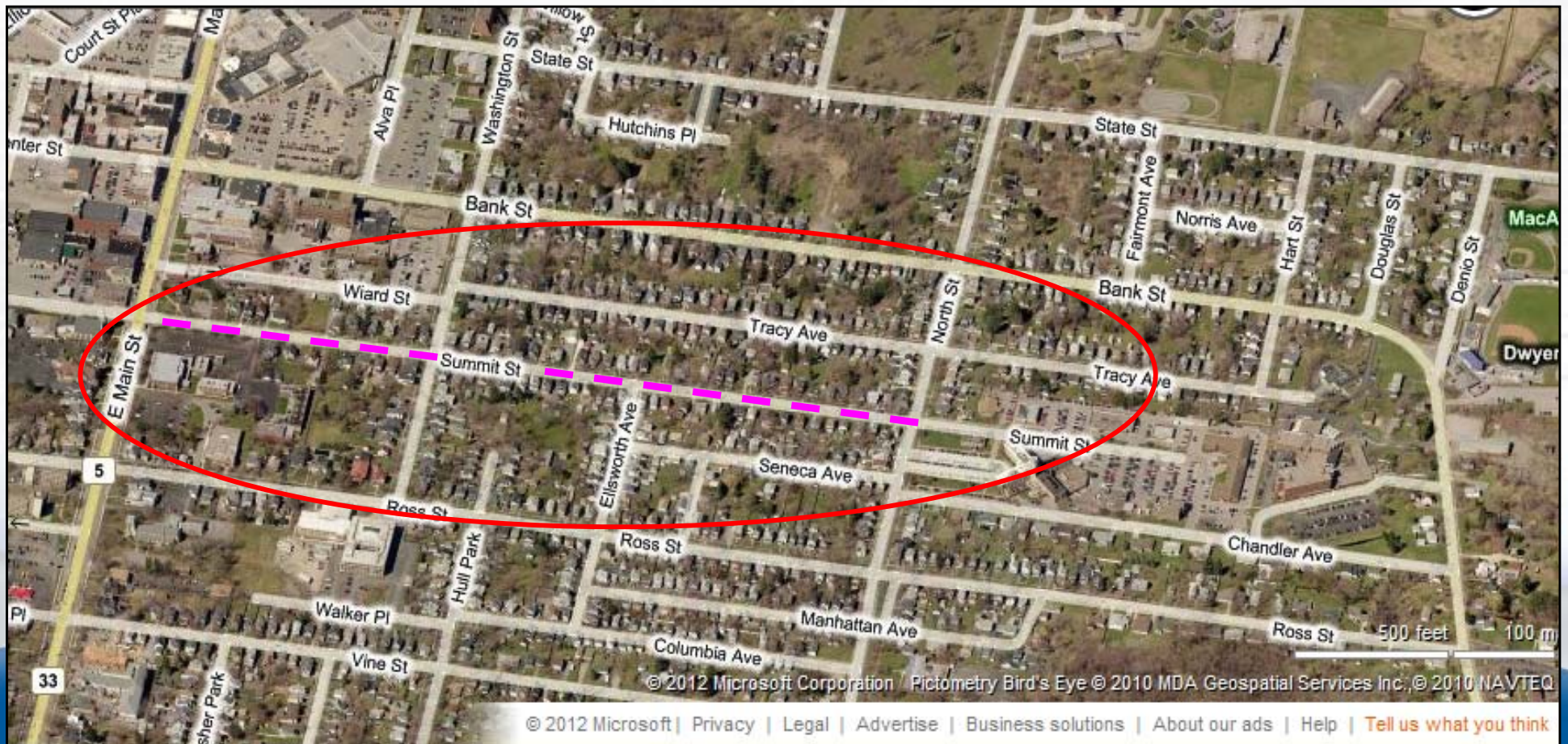
On-Street Parking

Drainage

Landscaping / Tree Concerns

Property Acquisition concerns

Construction Concerns



Comments & Questions ?

Ask us here today
or

Get a Comment Sheet here today w/Contact Information
and
SEND it IN!

