

HISTORIC PRESERVATION COMMISSION

Wednesday, October 26, 2022

5:00 p.m.

Council Board Room

One Batavia City Centre, Batavia NY

AGENDA

I. Roll Call

II. Call to Order

III. Approval of Minutes – 8/24/22

IV. Proposal

Address: 306 East Main Street

Applicant: All Access Builders

Proposal: Replace the roof with architectural shingles

Actions: 1. Review application for completeness
2. Public hearing
3. Discussion and action by the board

VIII. Adjournment



City of Batavia
Application to the Historic Preservation Commission

Date: 9/20/22

Historic Address: 306 E. MAIN ST.

Owner: FIRST BAPTIST CHURCH 716-783-0737 / 585-721-1803
Name Phone
306 E. MAIN ST. BATAVIA 14020
Street Address City/Town Zip
Phone Email

If not Owner: Contractor Agent for Owner
Applicant: ALL ACCESS BUILDERS LLC 716-770-6560
Name Phone

Detailed Description of Request: Roof Replacement Like of kind color of product
Certained Ludwick Hardblend Architectural Shingles

Requirement Checklist:

- Building Requirements:** Building Permit Application
 Photographs of Property
 Detailed Drawings
 Samples of Colors
 Description of Materials and/or Samples of Materials

- Sign Requirements:** Sign Permit Application
 Illustration of Sign and Location on Building
 Type of Lettering
 Dimensions of Sign
 Colors
 Description of Materials
 Type of Illumination
 Method of Attachment

- Painting Requirements:** Samples of Colors

Signature of Applicant: [Signature] Date: 9.20.22

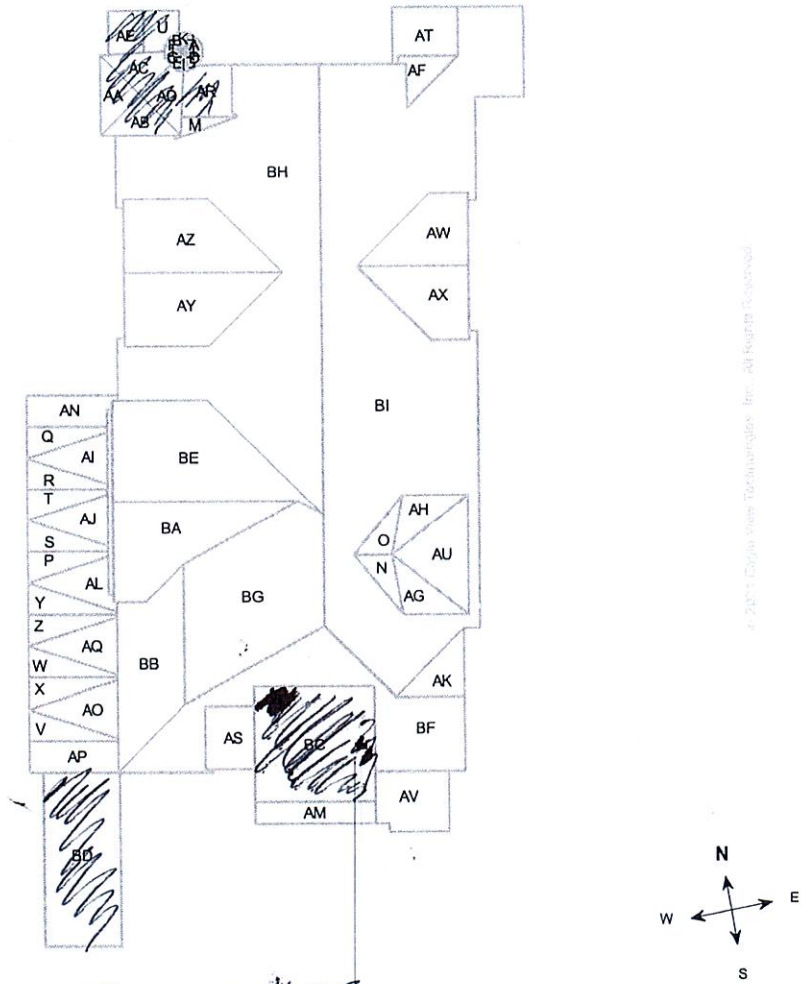
For Office Use Only

Reviewed by Code Enforcement Officer: _____ Date: _____

- Referred to HPC Referral to HPC not needed

NOTES DIAGRAM

Roof facets are labeled from smallest to largest (A to Z) for easy reference.



** AREAS NOT MARKED ARE WHERE ROOF IS BEING REPLACED **



PRODUCTS AVAILABLE NEAR ZIP CODE:

ENTER ZIP CODE

PLEASE ENTER YOUR ZIP CODE TO VIEW PRODUCTS AVAILABLE IN YOUR AREA



Get Help

CERTAINTEED NALTRAK®

FOR FAST, ACCURATE,

AND VISIBLE

INSTALLATION

TECHNICAL INFORMATION

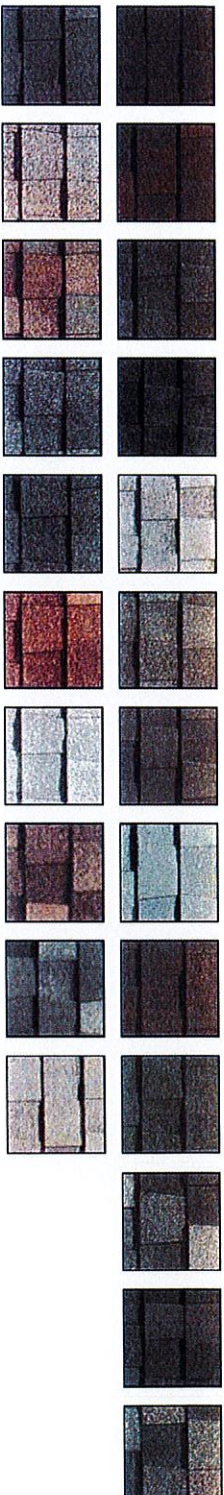
- Two-piece laminated fiber glass-based construction
- UL Class A fire resistance
- UL certified to meet ASTM D3462
- UL certified to meet ASTM 3018 Type I
- Conforms to CSA standard A123.5
- Miami-Dade Product Control Acceptance: Please see the Notice of Acceptance (NOA) to determine approved products by manufacturing location.

SPECS

- [Data Sheet - Landmark Series](#)
- [SDS - Asphalt Shingle - AR](#)
- [SDS - Asphalt Shingle - non-AR](#)
- [3-Part Spec - Landmark](#)
- [3-Part Spec - Landmark AR](#)
- [ICC-ES-ESR-1389](#)
- [L-5444 - Asphalt Roofing Shingles](#)
- [Miami-Dade NOA - Landmark Series](#)



Get Help



Due to variation in computer monitors and printers, the color samples seen on your computer screen may not exactly match the corresponding color. To verify actual product color, ask to see the actual product, available through a CertainTeed contractor or distributor.

LANDMARK®

[OVERVIEW](#)

[TECHNICAL INFO](#)

[INSTALLATION](#)

[WARRANTY](#)

[FIND A PRO](#)

For homeowners seeking true peace of mind, Landmark® shingles are the high-quality, reliable choice for beautifying and protecting a home. With a dual-layered design that emulates the dimensionality of true wood shake, Landmark asphalt shingles offer the heaviest weight and widest array of color options in their class, allowing you to create or re-create the ideal look for your home with confidence. Backed by a 100+ year legacy of trusted manufacturing performance, all Landmark shingles include CertainTeed's industry-leading, lifetime-limited warranty.

- Certified as meeting the industry's toughest third-party (UL) manufacturing quality standards
- Dual-layered construction provides extra protection from the elements
- Ten year StreakFighter® algae-resistance warranty
- Class A fire-resistance rating

About CertainTeed Roofing Technologies

As a result of our dedication to product improvements and manufacturing excellence, we've developed numerous valuable

- Technologies that help contractors and homeowners build better, safer, more comfortable homes. This CertainTeed product features
- Allowing roofing technologies:



Get Help

QuadraBond technology firmly secures the layers of a shingle together, helping roofs stand up to wind and weather so they maintain their beauty and performance. Featuring an industry-best four points of adhesion, and backed by CertainTeed's superior manufacturer's warranty, QuadraBond delivers exceptional quality and reliable strength against shingle delamination. [Learn more.](#)

StreakFighter™ technology provides reliable, long-term protection against the unsightly black streaks caused by algae formation. Featuring copper-infused surface granules that possess natural anti-algae properties, StreakFighter works to prevent algae from taking hold on shingles - helping roofs maintain their beauty and color. [Learn more.](#)

CertaSeal is a high-grade adhesive made from a proprietary blend of asphalts and polymers that seals shingles together on the roof to safeguard against wind uplift, shingle blow off, and moisture infiltration. Unlike harder sealants that can dry out and crack over time, it is designed to remain pliable and accommodate the slight structural shifts caused by years of temperature and weather changes. [Learn more.](#)

NailTrak™ wide nailing area has helped contractors install our shingles with speed, accuracy, and confidence for more than a decade. NailTrak removes the guesswork with three separately defined lines, presenting a large area to guide nailing and a smaller area for extreme steep-slope applications. Learn more about the NailTrak nailing line. [Learn more.](#)

Due to variation in computer monitors and printers, the color samples seen on your computer screen may not exactly match the corresponding color. To verify actual product color, ask to see the actual product, available through a CertainTeed contractor or distributor.

PRODUCT OVERVIEW

- [Landmark Series Brochure - Northwest](#)
 - [Landmark Series Brochure - North Central](#)
 - [Landmark Series Brochure - Lake Central](#)
 - [Landmark Series Brochure - Northeast](#)
- [\(More Info\)](#)

TECHNICAL SPECS

- [Data Sheet - Landmark Series](#)
 - [SDS - Asphalt Shingle - AR](#)
 - [SDS - Asphalt Shingle - non-AR](#)
 - [3-Part Spec - Landmark](#)
- [\(More Info\)](#)

INSTALLATION



Get Help

