



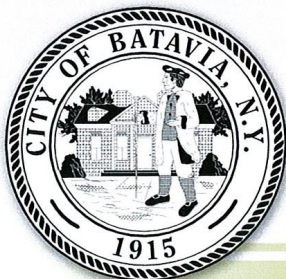
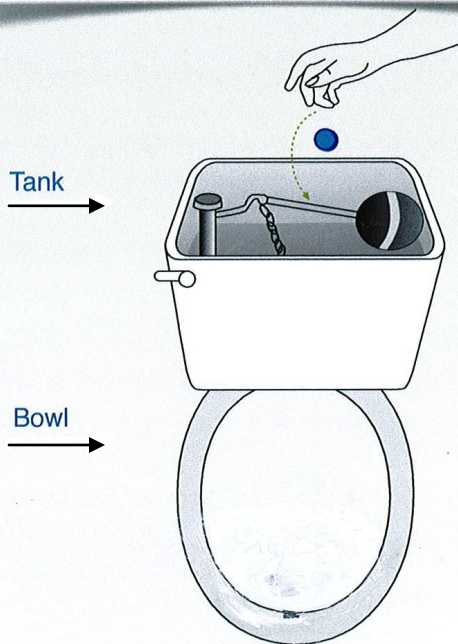
# LEAK FACTS

Leak dye tablets are available at the City Clerk's Office

## SAVE WATER

### BY FIXING LEAKS

Leaks inside your toilet can waste up to 200 gallons of water per day! The two non-toxic blue dye tablets in this kit give you a quick, easy way to check for leaks. Just follow the simple instructions. If you find a leak, please get it fixed and stop wasting water.



City of Batavia  
One Batavia City Centre  
Batavia, NY 14020

(585)345-6315



### LITTLE LEAKS WASTE BIG AMOUNTS OF WATER



Did you know that a dripping faucet can waste 20 gallons a day. These leaks waste your water and your money.

#### SIZE OF LEAK (Diameter)

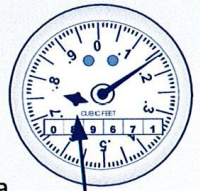
#### WATER WASTED EACH QUARTER (Assuming 60 lbs of pressure)

|                 |                   |
|-----------------|-------------------|
| • 1/32" drip    | 18,500 gallons    |
| • 1/16" trickle | 74,000 gallons    |
| • 1/8" stream   | 296,000 gallons   |
| • 1/4" stream   | 1,181,500 gallons |

- Toilet leaks are hard to find. They are normally caused by a bad flapper valve, flapper valve seat, a bad ballcock valve, an improperly positioned float arm or defective overflow tube.
- Test the toilet by dropping one of the enclosed dye tablets into the tank. **DO NOT FLUSH.** Leave 15-20 minutes. If water changes color, then its possible you have a leak and repairs must be made.
- Faucet leaks are easy to detect. If it drips, or worse, continues to keep running after you shut it off, it needs to be repaired. If the dripping water is hot, it is costing you to heat the water.
- Water dripping or running from the shower head when the shower is turned firmly off is usually caused by bad washers or seats in the valve. These washers and seats need to be replaced.

#### Determining if there is a leak:

Use your water meter to check for leaks. Start by making sure that all water-using appliances are not in use, including automatic ice-makers. If your meter has a low flow indicator (see example), it should not be turning. If it is, water is passing through the meter and there is a leak. Otherwise, note the meter reading on the dial and then check again after an hour. If the meter has moved, then you have some leaks.



(low flow indicator)

#### Repairs:

Problems with plumbing fixtures may be due to old age and corrosion or wear and tear. Replacement or repair parts can be purchased at a local hardware store or plumbing supply store. You can make repairs yourself or consult a plumber.



Thank you for doing your part in preserving our precious natural resources.